

At **IPI**, we're proud of our ability to be a full service company that focuses on the food industry. Metal fabrication, electric panel shop, machine shop, millwright, electrical contracting and general contracting are just a few things we do best.



**Some of our shop abilities include but are not limited to the following:**

Shear up to 1/4" x 10' long steel

Press brake up to 1/4" x 10' long material

Roll up to 1/4" 8'6" long minimum radius of 20" on 3/16" or larger, 12" on 11 gauge or smaller, small roll 14 gauge 3' long.

Manual mill 12" x 36" bed

Manual lathe 3 1/4" through spindle 60" long bed

CNC lathe 3" through spindle 20" long

CNC mill 40" x 20" x 16"

Water-jet 5' x 10' sheet up to 8" any material

Weld carbon steel, stainless steel, aluminum, Mig, Tig or Arc weld

Process Piping

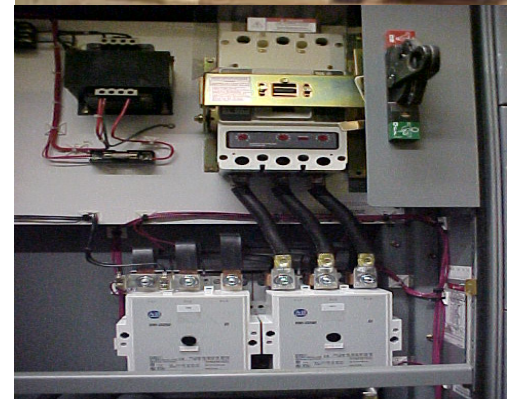
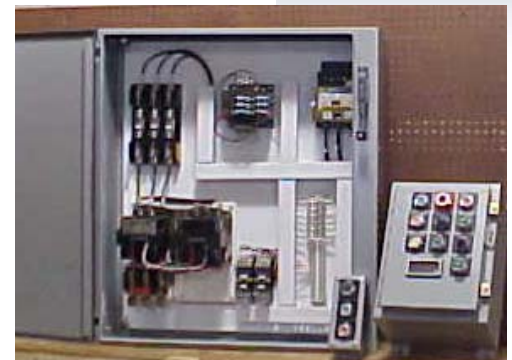
Full Electrical Panel Shop

Custom Panels and Enclosures

Conduit bending up to 5"

Custom Mounting Brackets

Custom Conveyor Systems



**Industrial Power, Inc.**

**635 Sweeden Road**

**Russellville, AR 72802**

**Phone: 479-498-2001**

**Fax: 479-498-2197**

**[www.industrialpowerinc.net](http://www.industrialpowerinc.net)**

**"Quality Work, One Job At A Time"**